



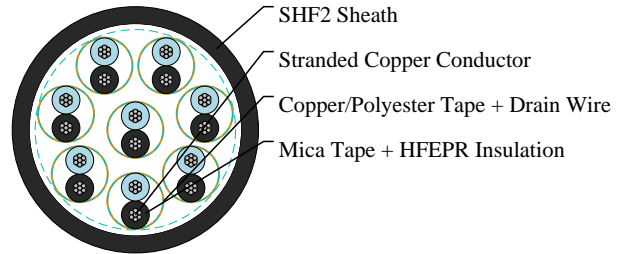
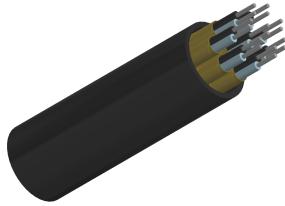
Caledonian

NEK606 Caledonian Offshore & Marine Cables Fire Resistant Instrumentation Cables

www.caledonian-cables.com

marketing@caledonian-cables.com

S107 (Formerly S13) BU(i) 250 V



APPLICATIONS

These cables are flame retardant, low smoke, halogen free and mud resistant, used for instrumentation, communication, control and alarm systems.

STANDARDS

IEC 60092-376
IEC 60092-360
IEC 60332-1
IEC 60332-3-22
IEC 60754-1,2
IEC 61034-1,2
NEK 606:2016
IEC 60331-21

VOLTAGE RATING

250V

CABLE CONSTRUCTION

Conductors: Circular tinned annealed stranded copper wire to IEC 60228 class 2 or class 5.

Insulation: Mica tape + Halogen free EPR compound or Mica tape + XLPE.

Twinning: Colour coded cores twisted together.

Individual Shielding: Each pairs/triples are screened by copper backed polyester tape in contact with a stranded tinned copper drain wire and wrapped with polyester tape. Pairs/triples are numbered with numbered tape or by numbers printed directly on the insulated conductors.

Outer Sheath: Halogen free thermosetting compound, SHF2, coloured grey (blue for intrinsically safe).

MECHANICAL PROPERTIES

Bending Radius: 8×OD (during installation); 6×OD (fixed installed)

Temperature Range: -20°C ~ +90°C

TECHNICAL CHARACTERISTICS



Caledonian

NEK606 Caledonian Offshore & Marine Cables Fire Resistant Instrumentation Cables

www.caledonian-cables.com

marketing@caledonian-cables.com

| Nom. Cross-Section Area | Nom. Conductor Diameter | Maximum Resistance @20°C | Mutual Capacitance | Nominal Inductance @ 1KHz | Maximum L/ R @ 1KHz |
|-------------------------|-------------------------|--------------------------|--------------------|---------------------------|---------------------|
| mm ² | mm | Ohm/km | nF/km | MH/km | μH/Ω |
| 0.75 | 1.1 | 26.3 | 85 | 0.731 | 20 |

DIMENSION AND PARAMETERS

| Construction No. of elements×No. of cores in element×Cross section | Nominal Insulation Thickness | Nominal Sheath Thickness | Approx. Overall Diameter | Approx. Weight |
|--|------------------------------|--------------------------|--------------------------|----------------|
| mm ² | mm | mm | mm | kg/km |
| 8×2×0.75 | 0.6 | 1.4 | 17.3 | 495 |